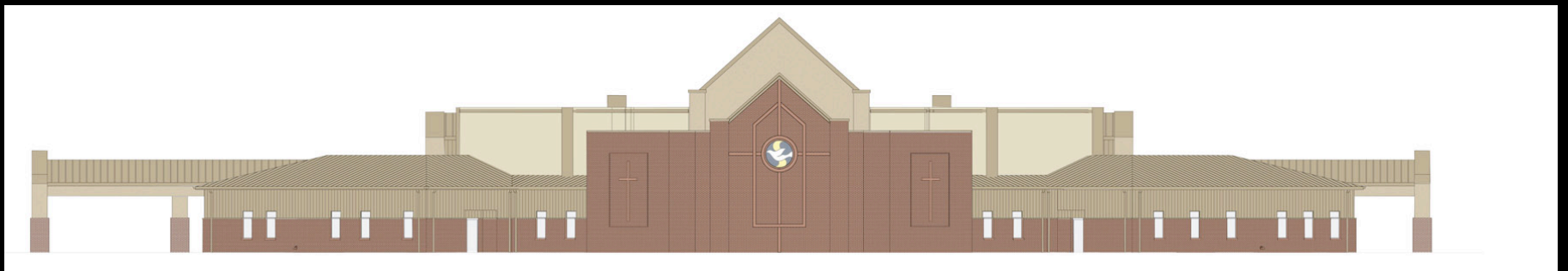
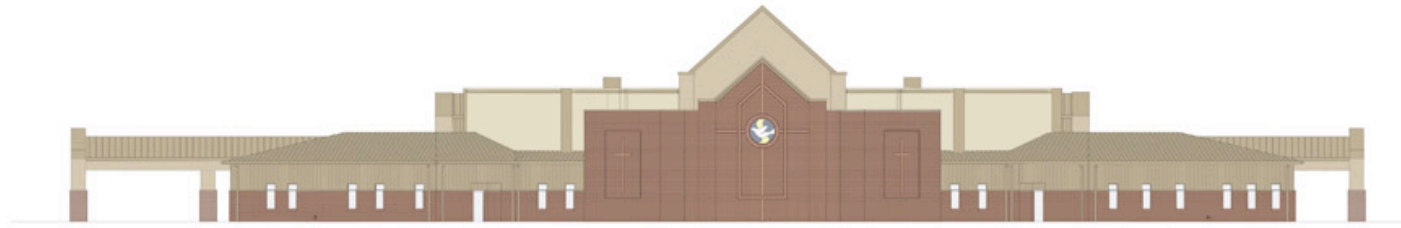


Sharon Baptist Church

Savannah, Tennessee





1 Front Elevation
332' x 1'-0"



2 Left Elevation
332' x 1'-0"



4 Back Elevation
332' x 1'-0"



3 Right Elevation
332' x 1'-0"

LOGO:



VAUGHAN ASSOCIATES ARCHITECTS INCORPORATED

111 HURRAY GUARD DRIVE, SUITE B
JACKSON, TN 38401
PHONE: 731 / 688 - 6100
FAX: 731 / 688 - 8070
HARDING@VAUGHANARCH.COM

SEAL:



CONSULTANTS:

COPYRIGHT:
THIS DRAWING IS THE PROPERTY OF VAUGHAN ASSOCIATES ARCHITECTS INCORPORATED. NO PART OF THIS DRAWING IS TO BE REPRODUCED OR TRANSMITTED IN ANY FORM OR BY ANY MEANS, ELECTRONIC OR MECHANICAL, INCLUDING PHOTOCOPYING, RECORDING, OR BY ANY INFORMATION STORAGE AND RETRIEVAL SYSTEM, WITHOUT PERMISSION IN WRITING BY VAUGHAN ASSOCIATES ARCHITECTS INCORPORATED.

PROJECT:

A NEW BUILDING FOR
SHARON BAPTIST CHURCH

3514 DRAVENS ROAD
SAVANNAH, TENNESSEE 38372

REVISION	DATE	DESCRIPTION

PROJECT NO: 015
 PLOTTED: 03/08/2011 11:41 AM
 DRAWN BY: JESSICA KING
 CHECKED BY: JEV VAUGHAN



